



UNIFORM CROSS-HATCH PATTERN

PROVEN TO WITHSTAND THE TOUGHEST SITUATIONS

CTP is proud to introduce the new line of CTP Liners with Uniform Cross-Hatch Pattern.

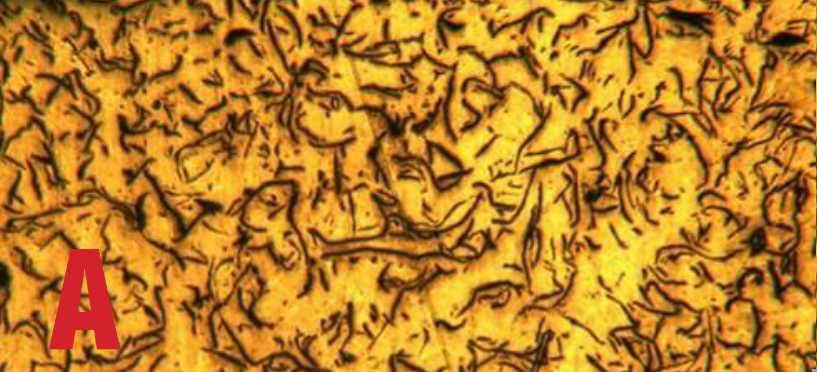
After extensive testing on the field and in the lab, CTP Liners are proven to withstand and surpass industry standards, resulting in a durable long lasting liner.

Some of the key features and benefits of CTP Liners are:

- » Induction hardened gray cast iron ensures reliability in the harsh environment of the engine cylinder.
- » Uniform Cross hatch pattern provides enhanced surface durability and part lifespan.
- » Roll burnished flange to increase strength and durability.
- » Anti-corrosive coating on exterior wall protects the liner and extends shelf life.
- » New packaging built with extra padding protects the delivery of the liners from our warehouse to your hands.



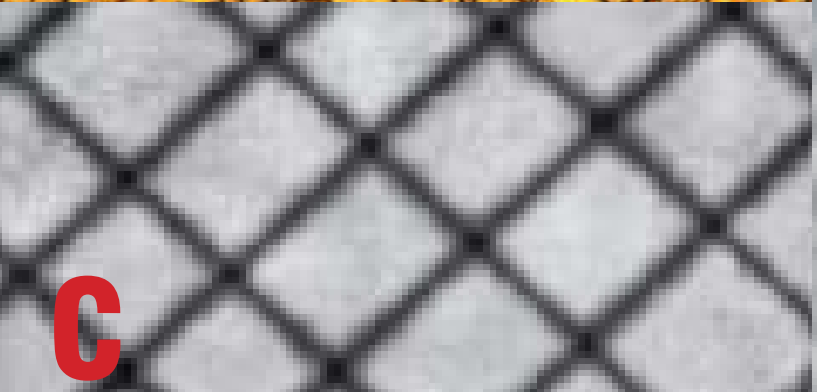
For a list of some our CTP Liners, Please see the next page.



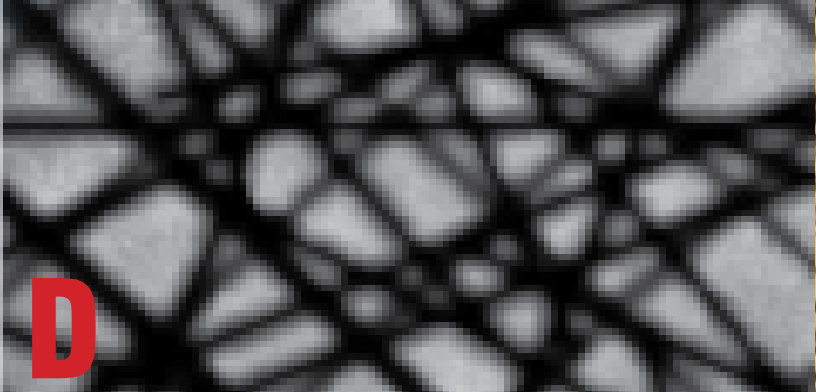
A



B



C



D

CTP Liners at a microstructural level:

A: Example of CTP liner microstructure. Graphite flakes scattered in Iron Matrix (orange) are evenly Distributed, not oriented in random directions.

B: Example of a poor liner microstructure. Microstructures with very small or very large flakes will not be ideal and will likely cause cracks to form in the material.

C: Example of CTP liner uniform cross hatch pattern.

D: Example of poor and random cross hatch pattern

Uniform Cross Hatch pattern CTP Liners:

Part No.	Engine
1105800	3304, 3306
1111815	3054
1238206	3508, 3512, 3516
1260739	D343
1326881	3406E, C16
1482125	C10, C12
1903562	C9
1979322	3400
1979330	C11, C12, C13
2117826	3508, 3012, 3016
1W8311	4.236, 3054
6I0164	416B, 3054
7C3182	426, D4
8N5676	D339, D342, D364
8N9174	D353, D379, D398
8S2240	D330, D333



* Other part no. not included in the list are available. Please contact your sales representative if you have any questions. Part Numbers are used for reference purposes only